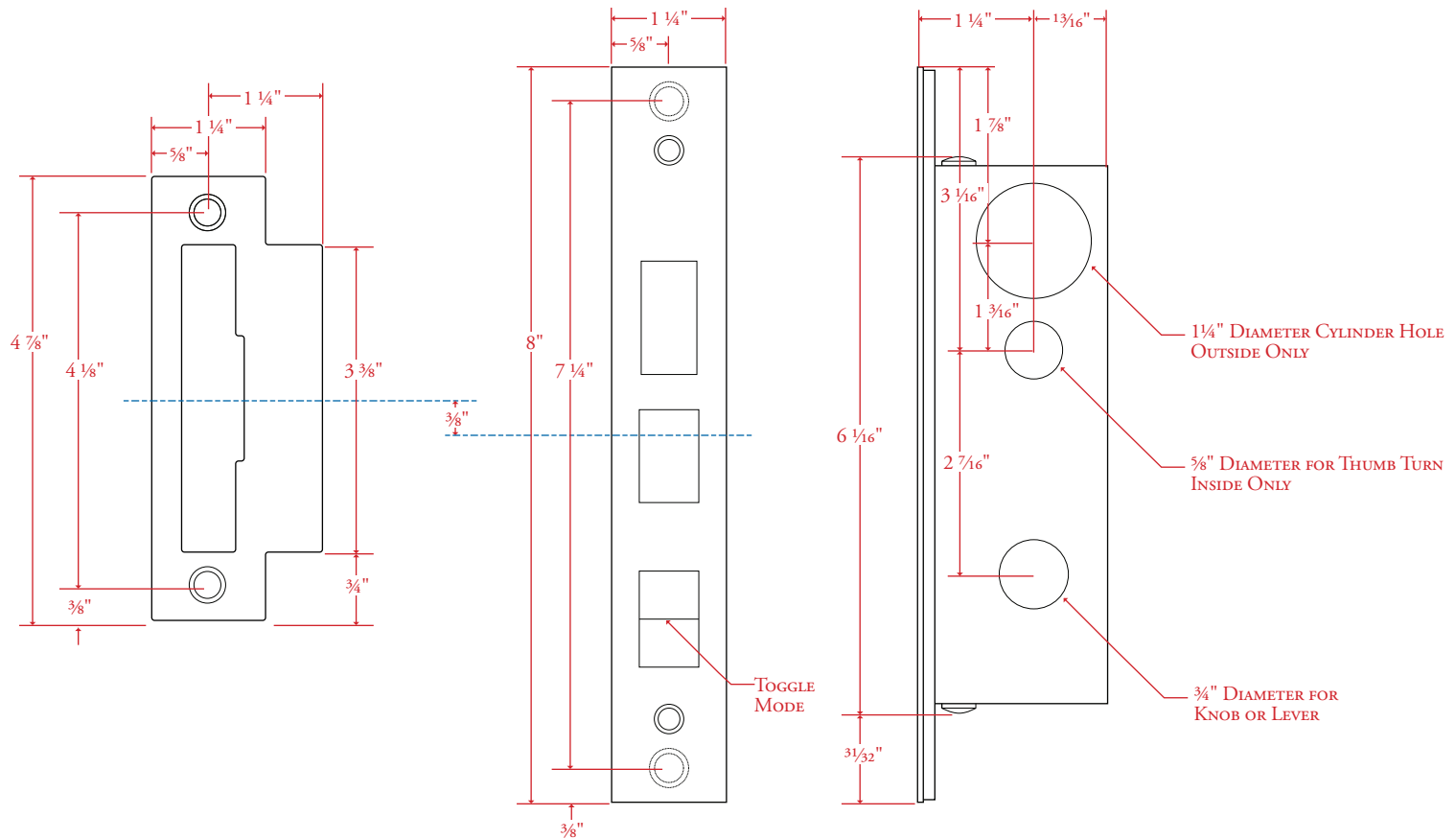


NARROW MORTISE ENTRY LOCKSET WITH TOGGLE

N° 74964 with 1 ¼" Backset



Drawing shown at 1/2 scale. Please do not scale drawing. Template is for reference only, not mortising purposes. All field cutting and fitting should be done with physical hardware.
Please note when mounting hardware, face plate and strike use #12-24 flat head screws.
Universal strikes are supplied with most locksets. Handed strikes available upon request at no additional charge.